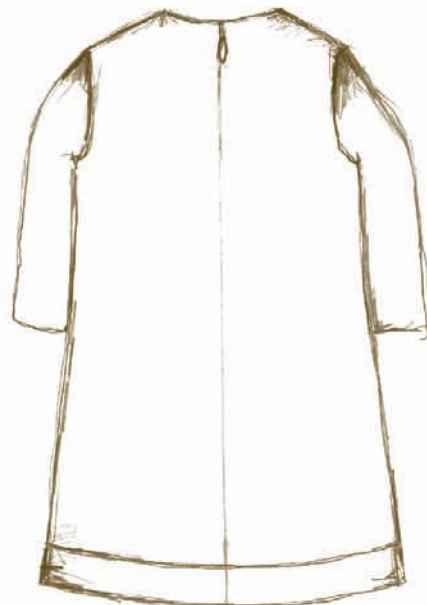


# M.

sewing patterns with a vintage twist



ILEANA - LOUISA REMIX

1-10y  
girls

[www.compagnie-m.com](http://www.compagnie-m.com)

## Description:

The Ileana –Louisa remix dress is a basic A-line dress with an Ileana collar & button placket option of your choice. In this example I added an extra contrasting hem band, but of course you don't need add one.

## Patterns:

You'll need pattern pieces from the Ileana & Louisa dress to sew this remix.

## Pattern pieces:

### LOUISA:

We'll not use a Louisa pocket at the front. That's we replace the front & pocket pieces by the front lining.

#### Main fabric

Front lining (#4):	Cut 1 on fold
Back lining (#5):	Cut 2 (right & left)
Sleeves (#10):	Cut 2 on fold

#### Lining fabric

Front lining (#4):	Cut 1 on fold
Back lining (#5):	Cut 2 (right & left)

As explained in the Louisa dress instructions on page 4 you can fully line this dress or only line the bodice.

### ILEANA:

#### Contrasting fabric:

A button placket of your choice:

Short (shorter than bodice) (#21):	Cut 1 on fold
Long (longer than bodice) (#23):	Cut 1 on fold

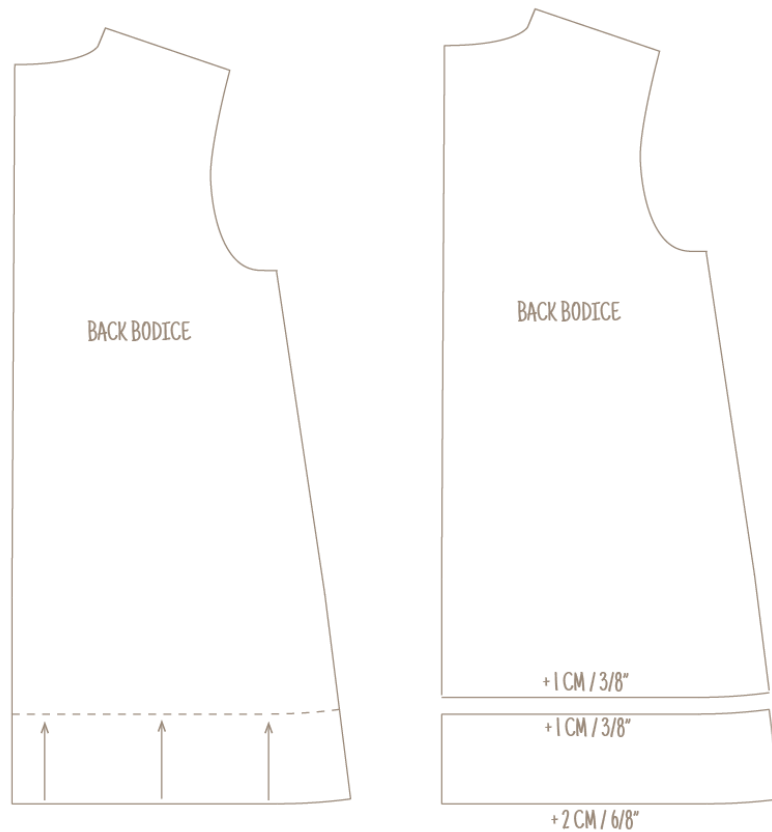
A collar of your choice:

Round Peter Pan collar (#9):	Cut 4 (2 left & 2 right): contrasting fabric
Triangular Peter Pan collar (#10):	Cut 4 (2 left & 2 right): contrasting fabric
Bow collar (#11):	Cut 2 (on fold): contrasting fabric
Bow (#12):	Cut 2: contrasting fabric
Extra bow piece (#13):	Cut 2: contrasting fabric
Floral shape collar (#14):	Cut 2: main fabric

All collars above can be sewn either in between the shoulder seams (half collar) or towards the back. At the back you can choose to let an opening next to the zipper or to sew it in between the back seam. Cut the pattern piece on the desired line. EXCEPTION: the floral collar can't be sewn in between the back seam.

## How to add a contrasting hem:

If you feel like adding a colored hem band like I did, you'll have to split the front & back panels at the bottom. I show the Mara dress drawing below, but the technique stays the same for the Louisa-Ileana remix dress.



Draw a line parallel with the bottom edge. You can choose the height. (Mine is the same height as the collar width). Cut the pattern in two on this line. Add new seam allowances as indicated above.

Repeat these instructions for the front panel.

## Instructions:

Sew the collar as shown on page 11 of the Ileana dress instructions.  
Attach the button placket to the front panel as shown on page 17 of the Ileana dress instructions.  
This should be the result.



## Intermezzo

If you choose to add a contrasting band, you'll have to add these first. Pin the band up side down and right sides together (RST). Sew at 1cm (3/8 in) from the edge to attach. Press the seam allowance upwards. I topstitched on the main fabric to keep the seam allowance in place.



Repeat these steps for the back panels.

Pin your back panels RST on top of the front panel. Match the shoulder seams. Sew the shoulder seams at 1cm (3/8in) from the edge. Press.



Insert zipper as shown on my online tutorial. Close the lower part of the back seam too. This should be the result.



Try to match the contrasting hem bands. :)



Pin your back lining panels RST on top of the front lining panel. Match the shoulder seams. Sew the shoulder seams at 1cm (3/8in) from the edge. Press.

Add the lining to the dress as shown on page 15 of the Louisa dress instructions.



This should be the result.



Add the sleeve as explained below: Pin the top the sleeve RST with the shoulder seam. Pin the ends of the sleeves together with the ends of the sleeve opening. Pin the rest in between keeping ease in mind. Sew at 1cm (3/8 in) from the edge to attach the sleeve. This should be the result. Repeat these steps for the 2<sup>nd</sup> sleeve.



Pin the sleeve and side seam RST. Make sure to match the armpit. Sew at once from the sleeves towards the bottom of the dress at 1cm (3/8 in) from the edge. Make sure to turn the seam allowance of the sleeve outwards. Repeat on the other side.

Pin the side seams of the lining RST. Sew at 1cm (3/8 in) from the edge to close the side seam.



Hem the dress at the bottom and sleeves as explained on my website (see tutorials).

### Share your dress:

Ta-daa! Finished! I hope you're happy with the result! It would be nice if you share your pictures of your remix dress on my Flickr group. If you have a blog post planned about your project, please let me know! [marte@compagnie-m.com](mailto:marte@compagnie-m.com)

