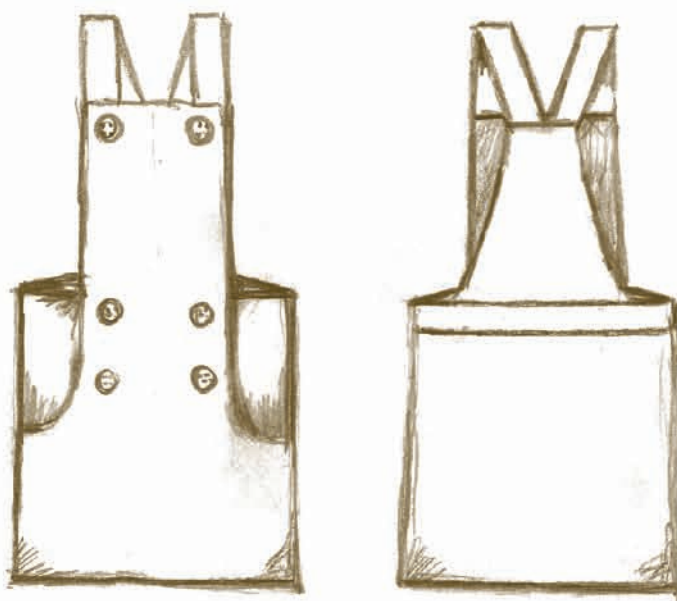




sewing patterns with a vintage twist



CHARLES DRESS

1-10y
kids

www.compagnie-m.com

GIRLS

Description:

The Charles dress is a little sister for the Charles pants. A completely new garment that can be sewn starting from the Charles pants by adjusting 3 pattern pieces. This free tutorial includes a new back pattern piece that you can download on my website.

Patterns:

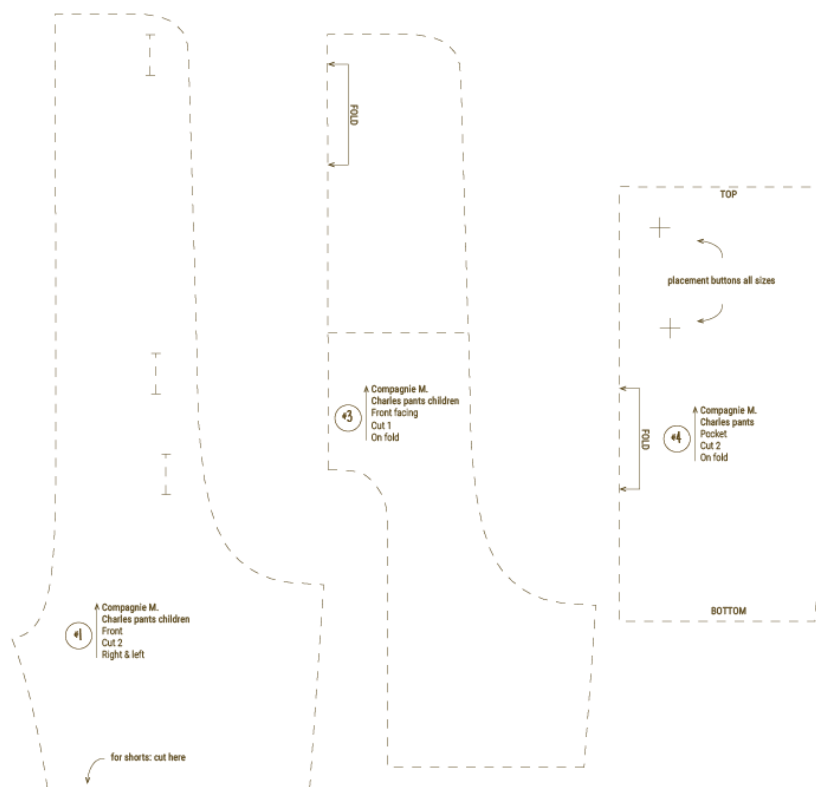
You only need the Charles pants pattern to start from.

Pattern adjustments:

To make the Charles dress you have to adjust 3 pattern pieces yourself. This is a detailed tutorial on how to do this. Start from the pattern WITHOUT seam allowance to make these adjustments. This is super easy so don't let the drawings scare you. I thought: the more drawings, the easier for you. This only takes 10 minutes!

We'll adjust these pattern pieces:

- #1: front
- #3: front facing
- #4: pocket

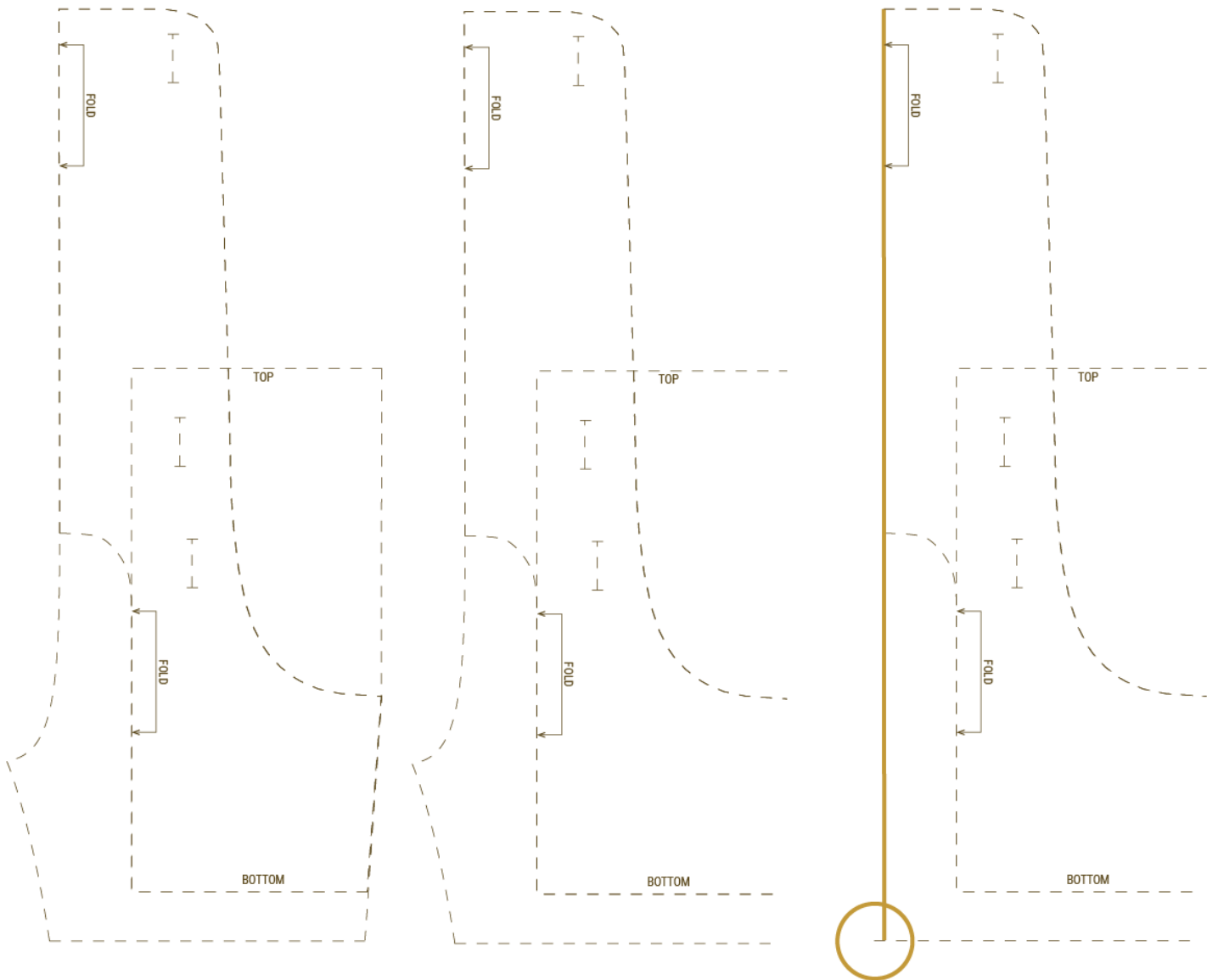


Step 1 - 3:

Left: Trace the 3 pattern pieces shown above WITHOUT seam allowance. Place the pattern pieces on top of each other as shown below. Trace again.

Middle: We'll replace the side seam by a new inclined one, so I deleted this line on the middle drawing below. You can use your eraser for this step! ☺ If we don't make this adjustment, your girl will not be able to move in the new Charles dress.

Right: We'll replace the curved pants middle centerline by one straight line as shown below.



Step 4 - 6:

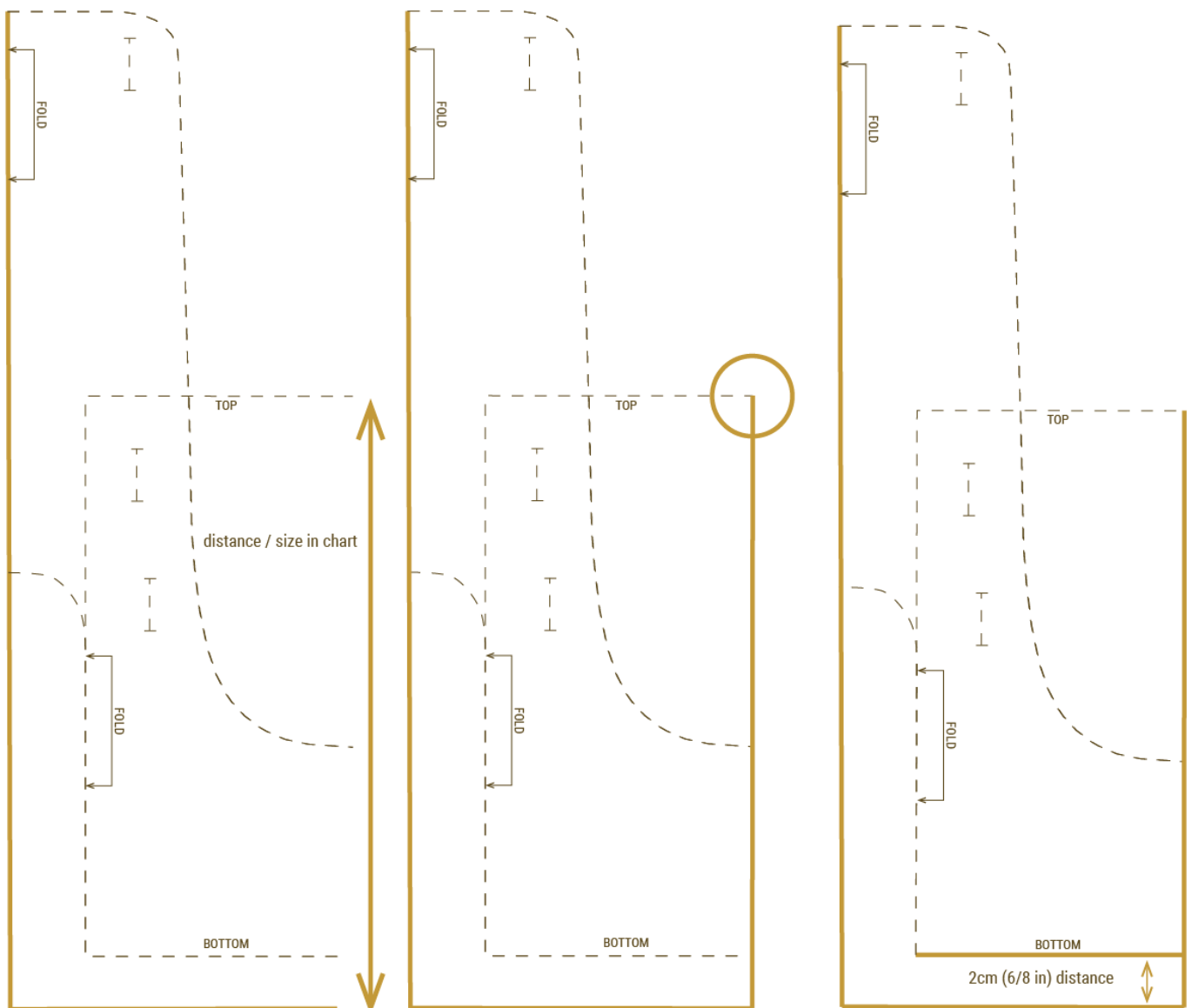
Left: Now we'll adjust the length of the dress to the right length. The measurement from the top of the pocket (line with top) till the bottom line depends on the size. This is a chart with the right distance per size:

Sizes	1yo	18 months	2yo	3yo	4yo	5yo	6yo	7yo	8yo	9yo	10yo
Centimeters	23,3	24,2	25,1	26,8	28,6	30,4	32,2	33,9	35,7	37,5	39,2
Inches	9,2	9,5	9,9	10,6	11,3	12,0	12,7	13,3	14,1	14,8	15,4

Measure the distance (length) of the skirt and adjust the bottom line if necessary (in this example which is a size 1, the adjustment is so small that you hardly see it on the drawing).

Middle: Draw a perpendicular line downwards starting in the right upper corner (corner with circle).

Right: Adjust the bottom line of the pocket to make the distance with this bottom line of the dress 2cm (6/8 in).

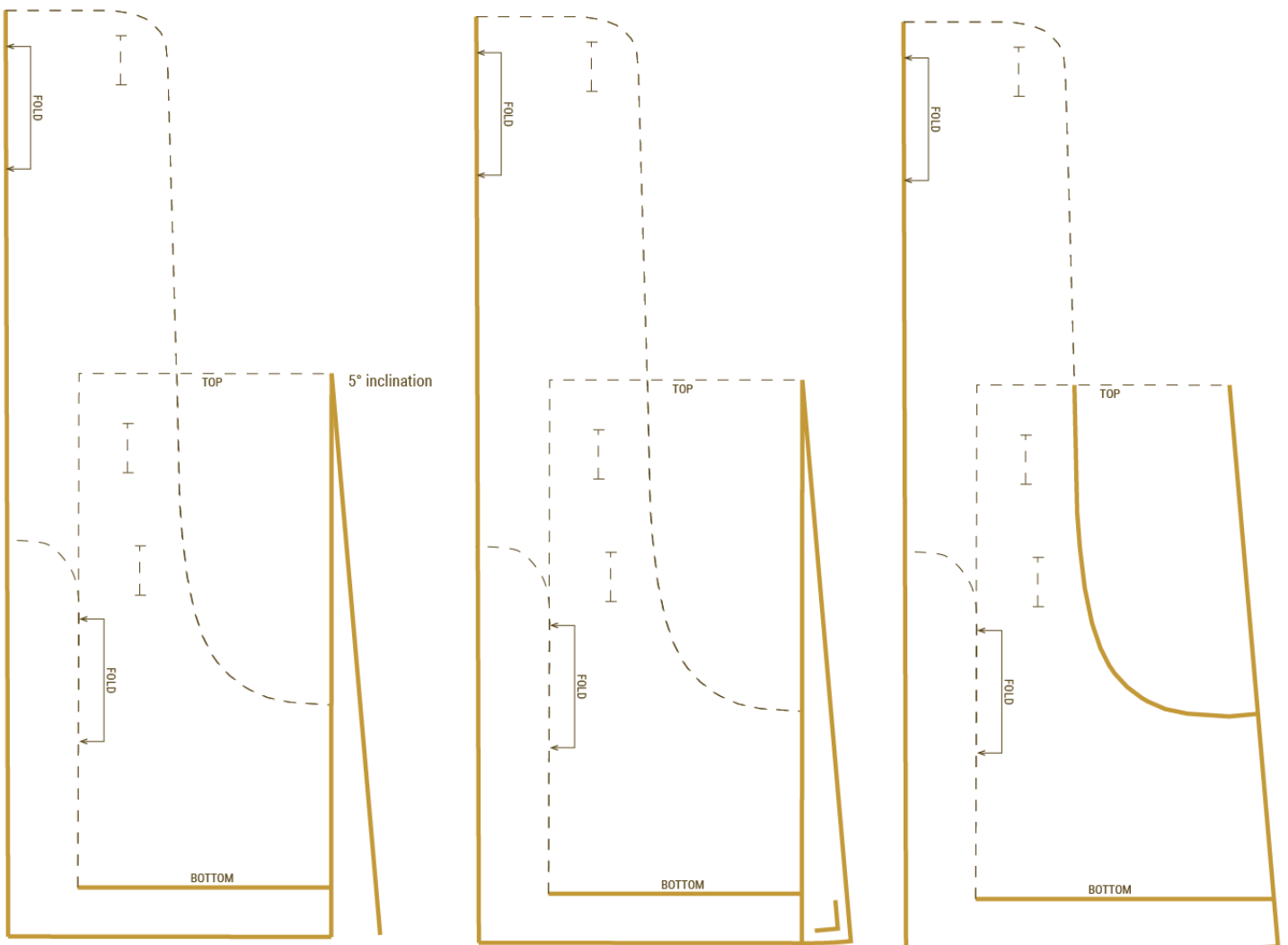


Step 7 – 9:

Left: We'll incline the side seam starting from the right upper corner. I use an inclination of 5° . This will give you a visual straight skirt as a result. Do you want an A-line shape? Then use an inclination of 10° . The rest of the tutorial stays the same. ☺ NOTE: don't forget to adjust the inclination of the new back skirt too if you want an A-line skirt. Add 5° extra to the side seam of the skirt back piece too!

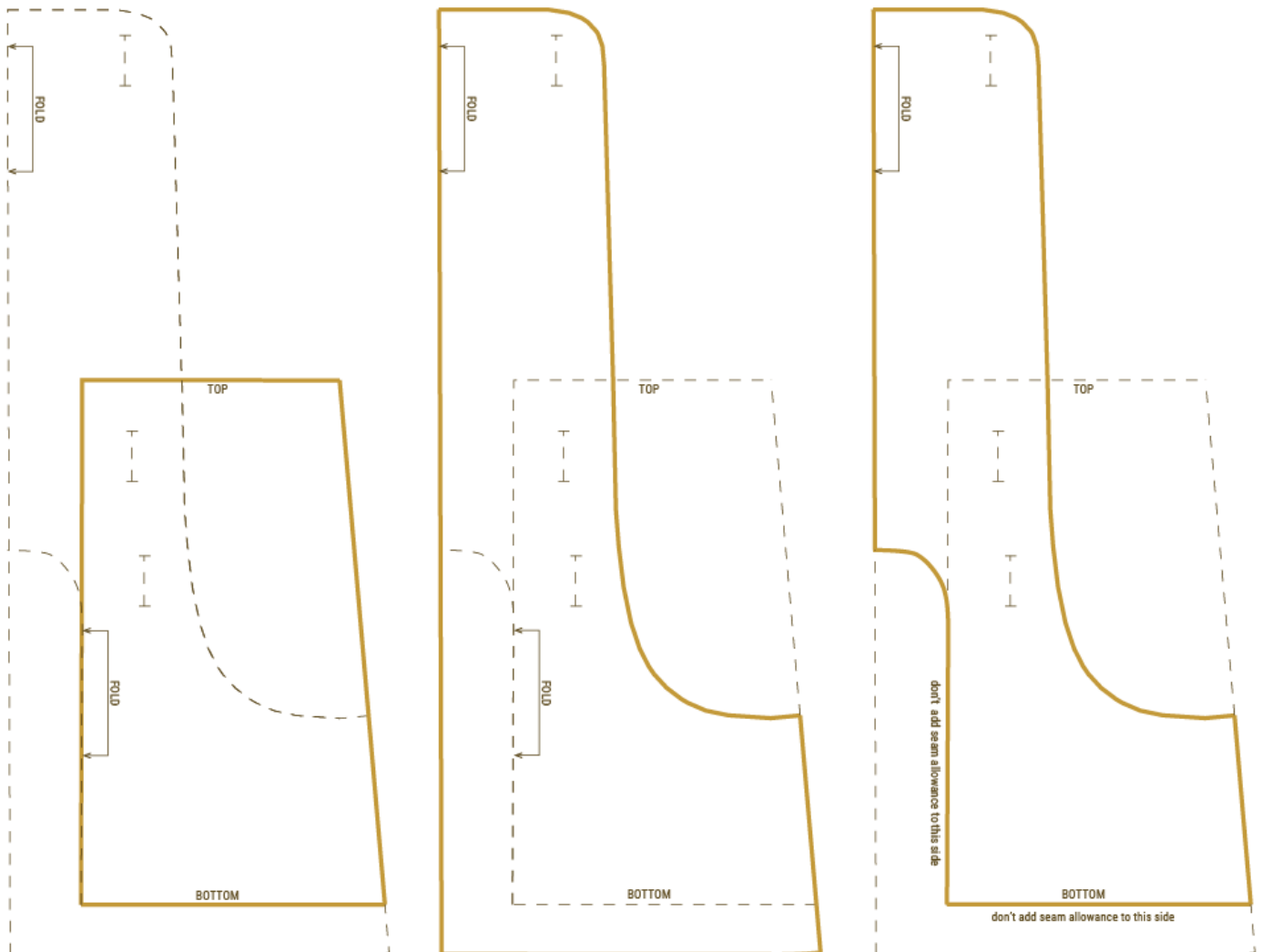
Middle: close the bottom line with a curved line. Make sure to end perpendicular with the side seam. The length of the side seam is the same distance at the length of the skirt (see chart above).

Right: Erase the old (straight) side seam. Make the curve of the pocket & the bottom line of the pocket longer till you reach the new side seam.



Now we have to split this drawing into three pattern pieces again. Trace the 3 pattern pieces as shown below.

- Left: #4: pocket
- Middle: #1: front
- Right: #3: front facing



Don't forget to add seam allowance to the new pattern pieces. I added 1cm ($\frac{3}{8}$ in) except at the hem where I've added 2cm ($\frac{6}{8}$ in).

DON'T ADD SEAM ALLOWANCE TO THE BOTTOM AND CURVED SIDE OF THE FRONT FACING!

NOTE: in the original Charles pants pattern the front was assembled from two separate pieces but for this skirt you can cut this pattern piece on the fold line. This means you will not have to add seam allowance to this side.

Pattern pieces:

Main fabric

NEW Front (#1): Cut 1 on fold

NOTE: in the original Charles pants pattern the front was assembled from two separate pieces but for this dress you can cut the front pattern piece on the fold line.

NEW skirt back (no number): Cut 1 on fold

NOTE: you can download this new pattern piece on the website.

Back waistband (#5): Cut 1: on fold

Dungarees piece (#6): Cut 2: on fold

Contrasting fabric:

NEW front facing (#3): Cut 1 on fold

NEW pocket (#4): Cut 2 on fold

Back waistband (#5): Cut 1: on fold

Back straps (#7): Cut 4: 2 right & 2 left

Front straps (#8): Cut 4

Instructions:

Assemble the front, front facing and pockets as explained in the Charles pants instructions on page 14. NOTE: you don't need to assemble the 2 front pieces since we've cut the front panel for the dress on the fold line.

Result at the front:



Result at the back.



Assemble the dungarees pieces, front and back straps as explained in the Charles pants instructions on page 18 / 19. This is the result:



Pin the back waistband RST (right sides together) on top of the back skirt piece. Sew the top seam at 1cm (3/8 in) from the edge. Iron the seam allowance upwards.

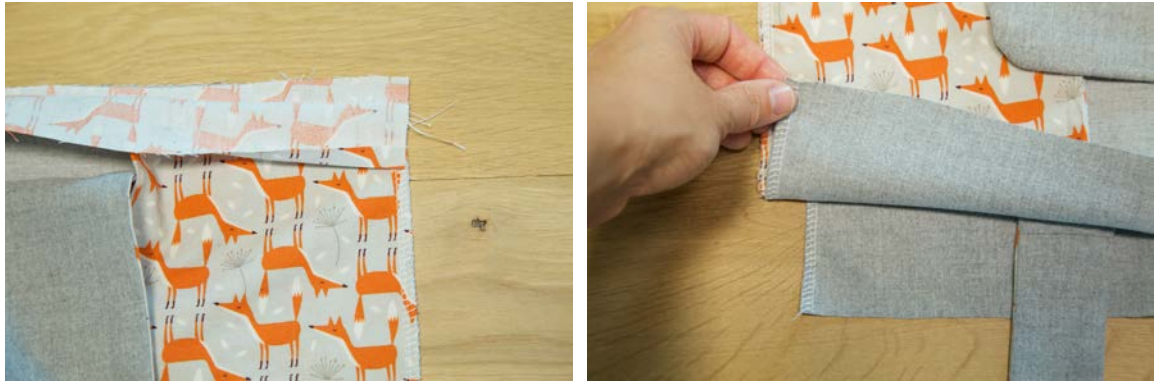
Follow the rest of the Charles pants instructions from page 19 – 22.



These are the pictures with the skirt piece but in fact the instructions stay the same. ☺

NOTE: At first I forgot to add buttonhole elastic. But I do recommend you to add one!





NOTE: while assembling the front and back pieces you will notice that the front panel is wider than the back panel. This is ok! 😊

Hem the dress at the bottom and sleeves as explained on my website (see tutorials).

Share your dress:

Ta-daa! Finished! I hope you're happy with the result! It would be nice if you share your pictures of your Charles dress on my Flickr group. If you have a blog post planned about your project, please let me know! marte@compagnie-m.com