



sewing patterns with a vintage twist



LOUISA - ILEANA-NINA

1-10y  
kids

[www.compagnie-m.com](http://www.compagnie-m.com)

GIRLS

## Description:

The Louisa-Ileana-Nina remix dress is a completely new Compagnie M. pattern that you can sew starting from the Louisa dress combined with the Nina pockets flaps and some Ileana details. In this example I added a new shoulder strap detail. You can download this pattern piece for free on my website. You'll need to adjust the pattern a bit, but trust me: it's super easy.

## Patterns:

You'll need pattern pieces from the Ileana dress, Louisa dress and the Nina skirt (kids) to sew this remix.

## Pattern adjustments:

To make this dress you'll have to split the front and back panels into new pattern pieces. You can choose to add an invisible zipper at the back, but in this example I used buttons to close the dress. This is a detailed tutorial on how to make the adjustments. Start from the pattern WITHOUT seam allowance. This is super easy so don't let the drawings scare you. I thought: the more drawings, the easier for you. This only takes 10 minutes!

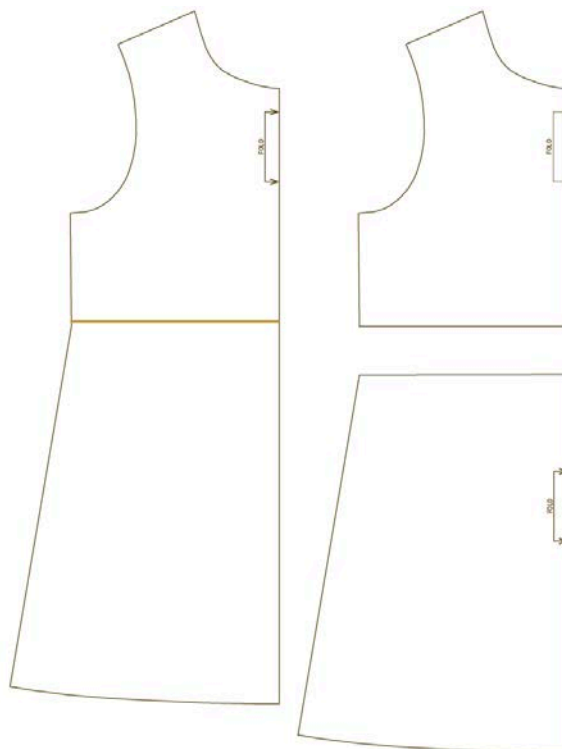
We'll adjust these pattern pieces:

LOUISA:

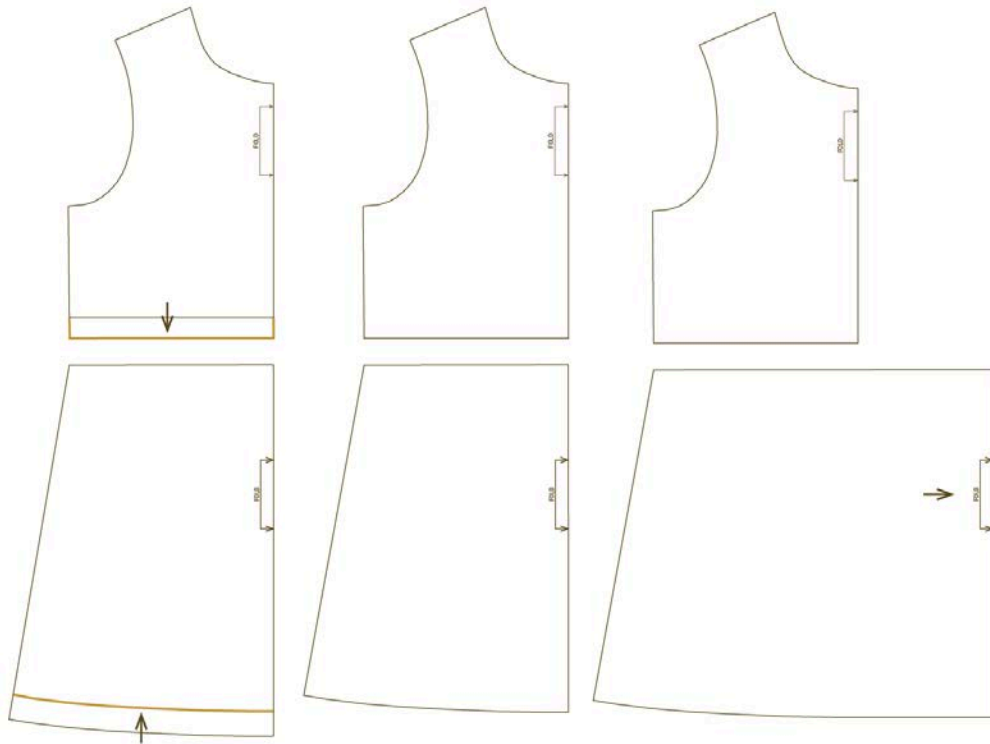
- #4: front lining
- #5: plain back

### Front panel

1. Split the front panel of the Louisa dress in two as shown below. NOTE: don't start from the Louisa front panel pattern piece, but from the front lining pattern piece!



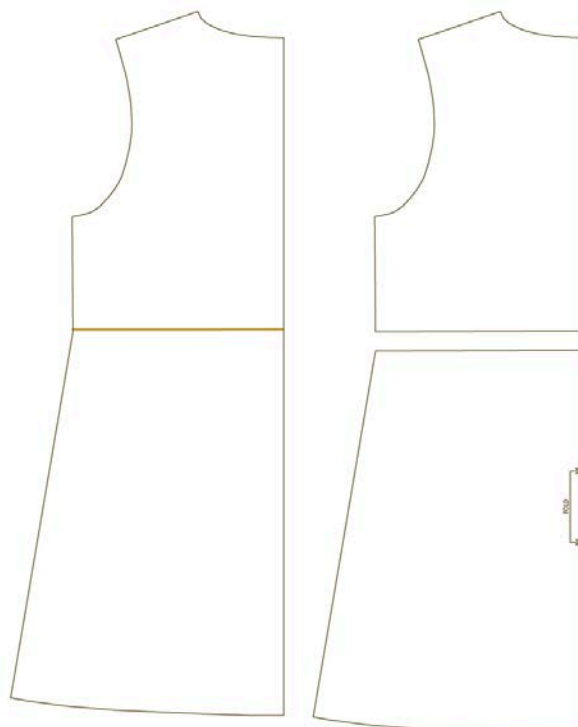
2. Adjust the length of the bodice to the same height as the Ileana bodice (without SA). Adjust the length of the skirt too. Subtract the amount you added to the bodice or you can also do this after trying the dress on.
3. Add 10cm (4 in) to the fold line of the front skirt piece. (For all sizes).



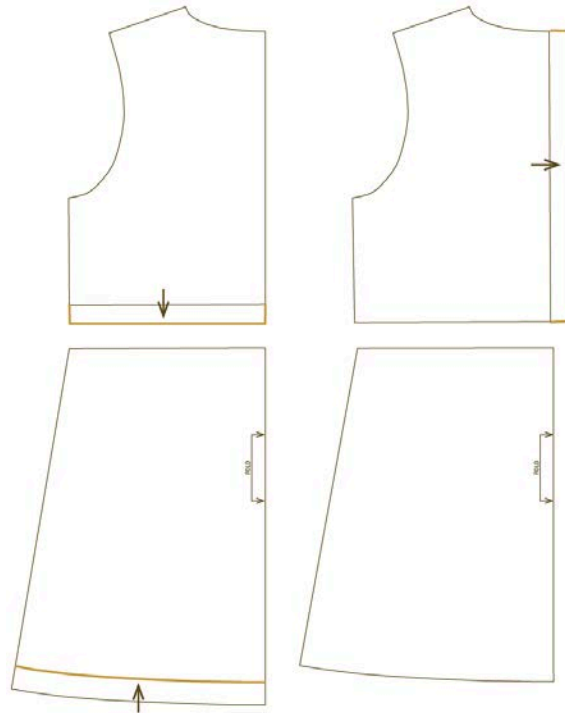
Add seam allowance to all pattern pieces. I use 1cm (3/8 in) everywhere except at the hem where I add 2cm (6/8 in).

### Back panel

1. Split the back panel of the Louisa dress in two as shown below.



2. Adjust the height of the bodice and skirt piece in the same way as you did for the front panel.
3. Add 1,5cm (5/8 in) to the center back seam of the bodice. This is for the button placket. NOTE: If you want to work with an invisible zipper, you don't need to make this adjustment.



Add seam allowance to all pattern pieces. I use 1cm (3/8 in) everywhere except at the hem where I add 2cm (6/8 in).

### Pattern pieces:

#### LOUISA:

##### Main fabric

Front bodice:	Cut 1 on fold
Front skirt:	Cut 1 on fold
Back bodice:	Cut 2 (right & left)
Back skirt:	Cut 1 on fold

##### Lining fabric

Front bodice:	Cut 1 on fold
Back bodice:	Cut 2 (right & left)

#### ILEANA:

##### Contrasting fabric:

Short button placket (shorter than bodice) (#21): Cut 1 on fold

#### NINA:

Rectangular pocket flaps:	Cut 4
---------------------------	-------

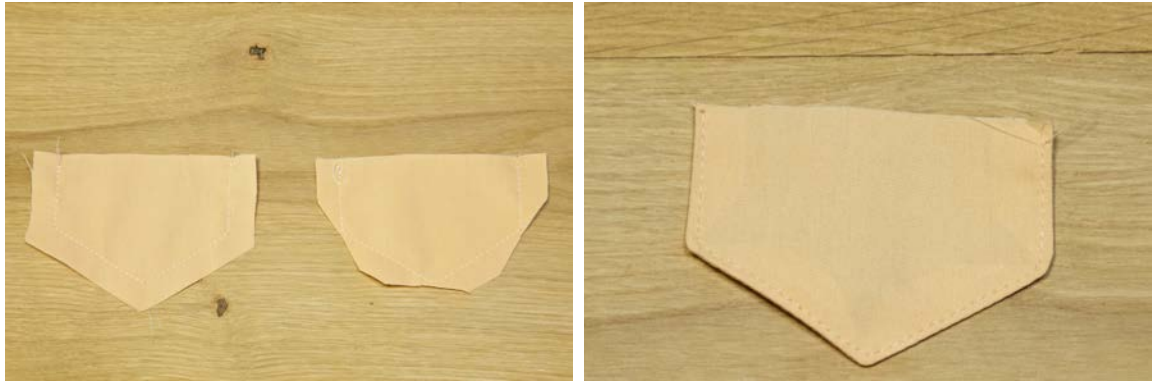
#### **SHOULDER STRAPS: Download this pattern piece for free on my website**

New pattern piece:	Cut 2
--------------------	-------

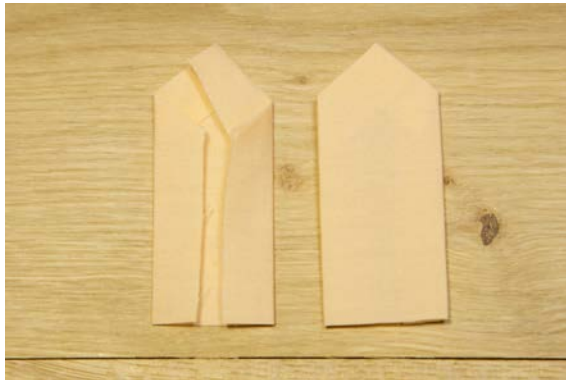
## Instructions:

### Preparations:

Sew the faux pocket flaps as shown in the Nina skirt instructions. This should be the result.



Fold the sides of the shoulder straps 1cm (3/8 in) inwards as shown below. Press.



Repeat this step for the button placket. Make a same rectangular point at the end.

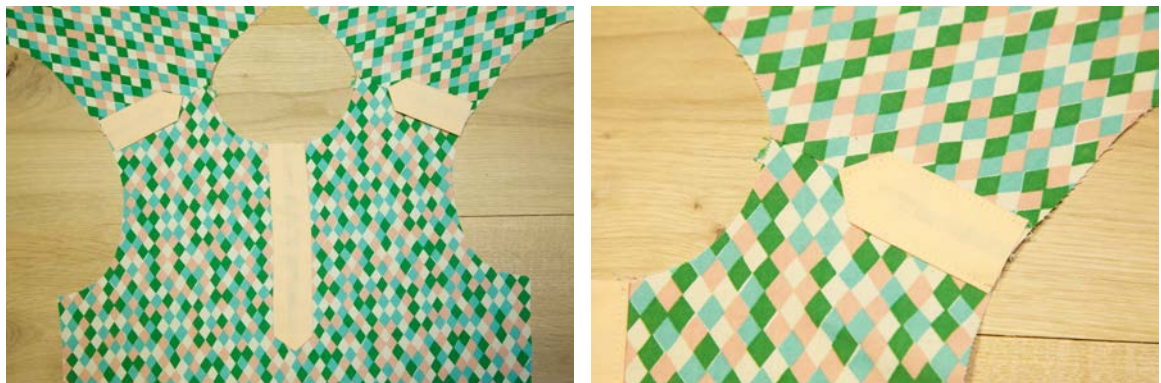


Bodice:

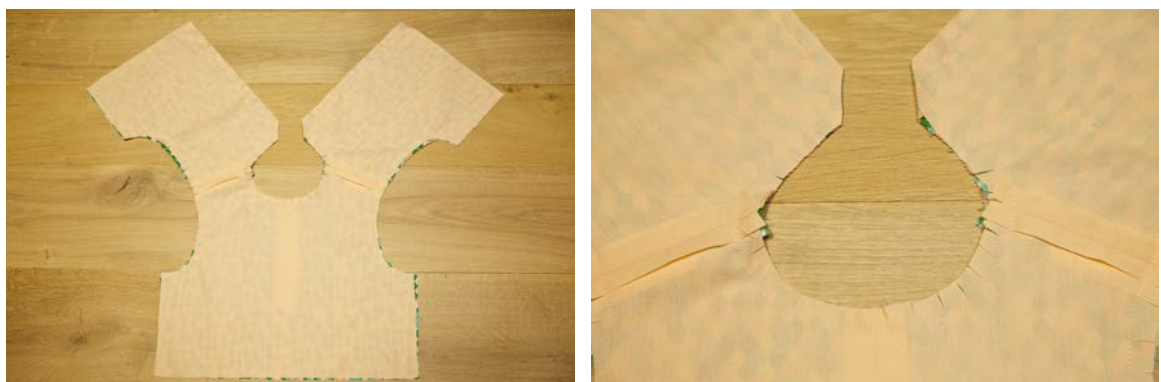
Pin the button placket on top of the front panel. Topstitch the edges at about 2mm (1/8 in).



Sew the shoulder seams as shown on page 18 of the Ileana dress instructions. Add the shoulder straps and topstitch the edges at about 2mm (1/8 in).



Sew the shoulder lines of the bodice lining and pin it on top the main fabric. Sew the neckline and armholes as explained on page 19 of the Ileana dress instructions. You may fully close the neckline in this case, as I will use buttons to close the dress at the back. Sew the back seams too. Trim the corners and turn the bodice to its final position.



Close the side seams as shown on page 29 of the Ileana dress instructions.



Skirt piece:

To define the position of the two box pleats at the front, we'll have to make a small calculation first. Measure the width of the finished front bodice. Divide this number by 4. This is the distance you have to keep for the box pleats measured from the side seam. (Keep in mind that you have a 1cm seam allowance at the side). So actually I measure the distance  $X + 1\text{cm}$  (3/8 in). Add a mark. This is the middle of the box pleat. Construct a box pleat that is 5cm (2 in) wide. Repeat these steps on the other side.



Pin the faux pockets flaps on top of the box pleats.



Check the result before moving on. Your skirt should be 1cm (3/8 in) wider at both sides than the bodice in this stage. This is the SA you need to construct the skirt.



Close the side seams of the skirt pieces and attach as shown on page 34 of the Ileana dress instructions. Hem the dress as explained on my website (under tutorials). Add buttons if you want to.



### Share your dress:

Ta-daa! Finished! I hope you're happy with the result? It would be nice if you share your pictures of your remix dress on my Flickr group. If you have a blog post planned about your project, please let me know! [marte@compagnie-m.com](mailto:marte@compagnie-m.com)